

# Spent Media Analysis

Sample Label: Media Sample A

User: Jessica Owens



## Spent Media Analysis:

**Sample Label:** Media Sample A  
**Time Completed:** 17:12 2021.07.29  
**Dilution Factor:** 10X (included in results)

**Batch Label:** Media Lot Analysis  
**RebelChip S/N:** RC002691  
**Comment:**

Analyte	mM	±	
DL-Alanyl-DL-Glutamine (AQ)	ND	ND	
DL-Alanine (Ala)	0.3	0.0	
DL-β-Alanine (βAla)	0.1	0.0	
DL-Arginine (Arg)	0.3	0.0	
DL-Asparagine (Asn)	ND	ND	
DL-Aspartic acid (Asp)	0.2	0.0	
Thiamine (B1)	ND	ND	
Pyridoxine (B6-OH)	ND	ND	
Pyridoxal (B6-Oxo)	ND	ND	
Choline	ND	ND	
DL-Citrulline (Cit)	ND	ND	
DL-Cystine (Cystine)	0.1	0.0	
γ-Aminobutyric acid (GABA)	0.0	0.0	
DL-Glutamine (Gln)	ND	ND	
DL-Glutamic acid (Glu)	ND	ND	
DL-Glutamine and DL-Glutamic acid (Glx)	0.4	0.0	
Glycine (Gly)	0.6	0.1	
DL-Histidine (His)	0.1	0.0	
DL-Hydroxyproline (Hyp)	0.1	0.0	
DL-Isoleucine (Ile)	0.1	0.0	
DL-Leucine (Leu)	0.4	0.0	

# Spent Media Analysis

Sample Label: Media Sample A

User: Jessica Owens



## Spent Media Analysis:

**Sample Label:** Media Sample A  
**Time Completed:** 17:12 2021.07.29  
**Dilution Factor:** 10X (included in results)

**Batch Label:** Media Lot Analysis  
**RebelChip S/N:** RC002691  
**Comment:**

Analyte	mM	±	
DL-Lysine (Lys)	0.4	0.0	
DL-1-Methylhistidine (1MH)	ND	ND	
DL-Methionine (Met)	0.1	0.0	
Nicotinamide (NAM)	ND	ND	
DL-Phenylalanine (Phe)	0.1	0.0	
DL-Proline (Pro)	0.3	0.0	
Sarcosine	ND	ND	
DL-Serine (Ser)	0.2	0.0	
DL-Threonine (Thr)	0.2	0.0	
DL-Tryptophan (Trp)	0.0	0.0	
DL-Tyrosine (Tyr)	0.3	0.0	
DL-Valine (Val)	0.2	0.0	

# Spent Media Analysis

Sample Label: Media Sample A

User: Jessica Owens



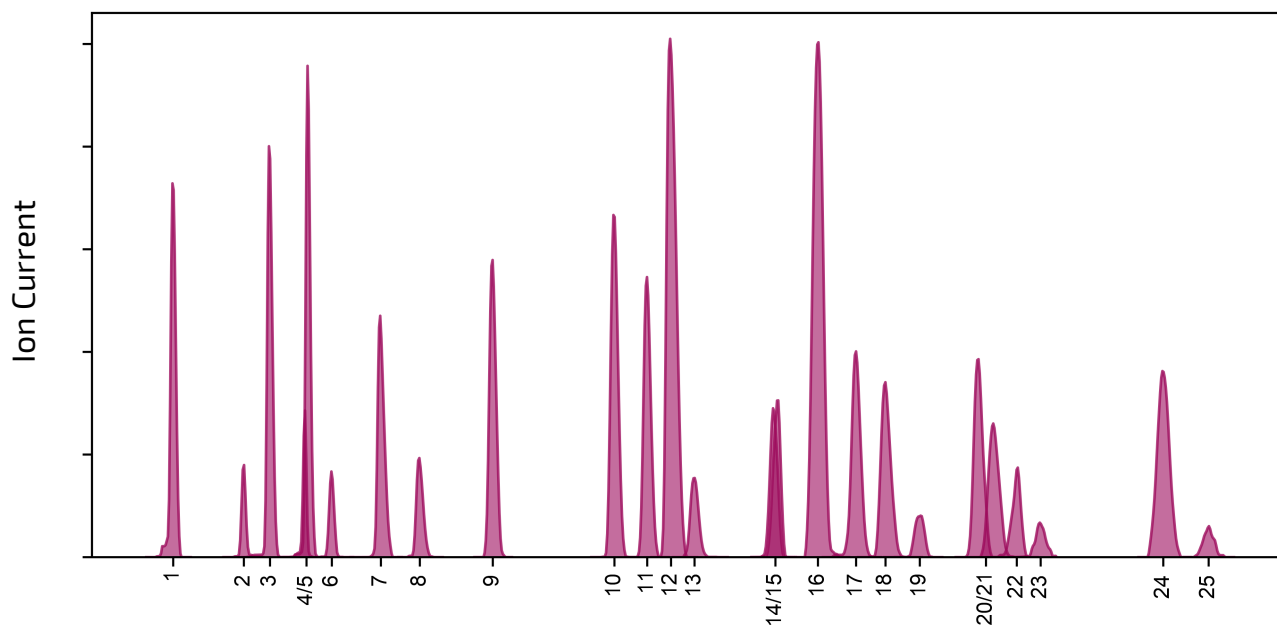
## Spent Media Analysis:

**Sample Label:** Media Sample A  
**Time Completed:** 17:12 2021.07.29  
**Dilution Factor:** 10X (included in results)

**Batch Label:** Media Lot Analysis  
**RebelChip S/N:** RC002691  
**Comment:**

---

### Extracted Ion Electropherograms



Analytes: (1) IS2, (2)  $\beta$ Ala, (3) Lys, (4) GABA, (5) Arg, (6) His, (7) IS3, (8) Gly, (9) Ala, (10) Val, (11) Ile, (12) Leu, (13) Ser, (14) Met, (15) Thr, (16) Pro, (17) Phe, (18) Glu, (19) Trp, (20) IS1, (21) Tyr, (22) Asp, (23) Cystine, (24) IS4, (25) Hyp.